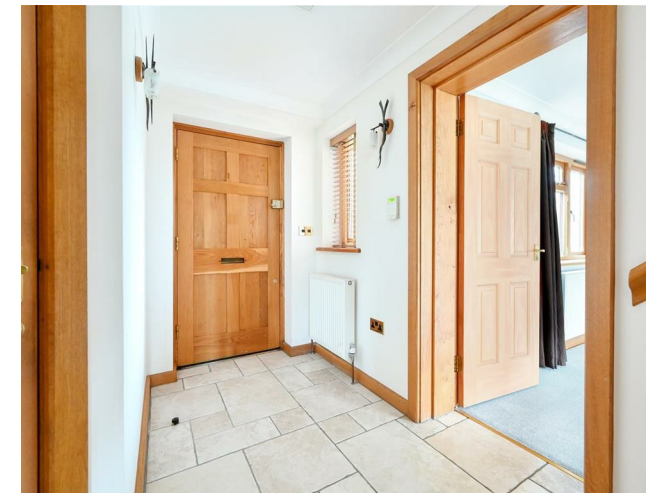




Littleworth Lane, Horsham, RH13 8NA
£2,750 Per Calendar Month

and company
bacon
Estate and letting agents



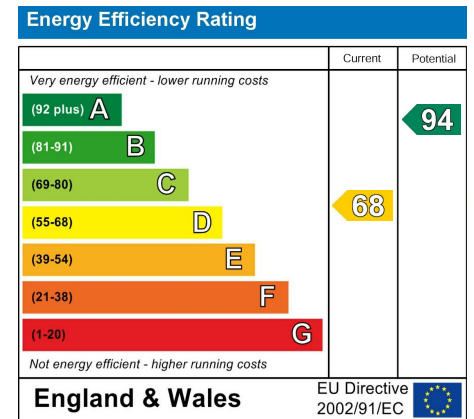
Situated close to the Camelia Botnar Garden Centre, this substantial four-bedroom detached home offers a perfect blend of rural tranquillity and modern living. Set on a generous plot, it boasts stunning views across open fields at the rear. Inside, the spacious main bedroom features an en-suite shower room with three additional bedrooms on the first floor plus a family bathroom., while the ground floor hosts a welcoming lounge with garden access, a versatile study/bedroom 5, and a functional kitchen with hi-gloss units incorporating two built in ovens, hob, fridge/freezer and microwave. There is also a separate utility room with dishwasher plus cloakroom. The home's oil-fired central heating and double-glazed windows provide year-round comfort. Offered as a long-term let, and pet-friendly. Outside the gravelled driveway (approached by an electric gate) has ample room for several vehicles plus there is the benefit of a detached garage. Epc D Council Tax F

- Detached 4 Bedroom Family Home in Rural Location
- Double Aspect Lounge and Ground Floor Study/Bed 5
- Large Kitchen/Dining Room Plus Separate Utility Room
- Master Bedroom with En Suite Shower Room
- Ground Floor Cloakroom
- Detached Garage plus Ample Driveway Parking
- Oil Fired Central Heating
- Long Let Available
- Pet Friendly









These particulars are believed to be correct, but their accuracy is not guaranteed. They do not form part of any contract. The services at this property, ie gas, electricity, plumbing, heating, sanitary and drainage and any other appliances included within these details have not been tested and therefore we are unable to confirm their condition or working order.

